

It is important to read through this manual carefully in order to ensure the function and useful length of the pool equipment. Pahlén AB is not responsible for product warranties or damages that occur as a result of faulty installation, improper use or poor maintenance.

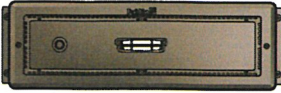

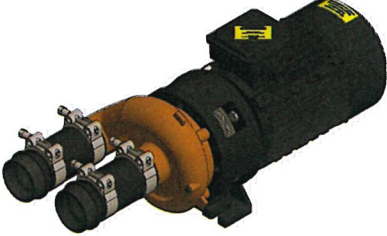

WARNING

- This appliance must not be used in aggressive water, salt water or pools/hot tubs with a chlorine machine/salt chlorinator, see the recommended water quality values.
- The appliance must be installed in accordance with applicable national laws and provisions and the electrical installation must only be carried out by a qualified electrician.
- Do not start installing the appliance until you have read and understood the installation instructions and warnings in this manual. If you have any questions about the installation instructions or warnings, please contact your local dealer.
- Under no circumstances may this appliance be started without being completely filled with water.
- This appliance must not be covered, placed near combustible material or in direct sunlight.
- This appliance must not be used by very young children (0-3 years).
- This appliance must not be used by young children (3-8 years) and people with significant and complex disabilities unless they are under constant supervision by a person who is responsible for their safety.
- This appliance may be used by children over 8 years of age and persons with reduced physical, sensory or mental capabilities or lack of experience or knowledge, provided that they're under supervision or have received information on how to use the appliance safely and understand risks that may occur by a person who is responsible for their safety.
- Children are not allowed to play with the appliance.
- Always disconnect the appliance from the supply before assembling, disassembling or cleaning.
- This appliance should not be cleaned or maintained by children without supervision.
- Pumps without indication that they are protected against the effects of freezing shall not be left outside during freezing weather conditions
- Failure to follow the installation instructions invalidates the product warranty.warranty.

Product Description

Jet Swim Athlete is a product used for training and exercise. It can be switched on and off via a push button on the front of the pool.

The Jet Swim Athlete consists of the following parts:

Essential parts	Mounting kit (for thick pool wall)	Pump kit	Control box
 1302100	 1302130	 1302185 (50Hz), 1302185HZ (60Hz)	 1302090 400V 130209NO 230V

Technical Data

Engine	4.0 kW	
Volage	230/400V 50Hz 3N~	265/460V 60Hz 3N~
Current	13.9 / 8.0 A	12.5 / 7.2 A
Pump capacity	67 m ³ /h	63 m ³ /h
IP class	IP55	
Ambient temperature	max +45°C	

The product is intended for the following water values:

Total chlorine content:	max 3.5 mg/liter*
Chloride (salt) content:	max 250 mg/liter
pH-value:	7.2–7.6
Alkalinity	60–120 mg/liter (ppm)
Calcium hardness:	100–300 mg/liter (ppm)
Iron:	max 0.1 mg/liter*
Copper:	max 0.2 mg/liter*
Manganese:	max 0.05 mg/liter*
Phosphorus:	max 0.01 mg/liter*
Nitrate:	max 50 mg/liter*

The product warranty does not apply outside these values.

* According to EN16713-3 2016

Safety

The jet stream is powerful, which is why one should not be closer than 0.5 m from the stream outlet for a protracted period. People with long hair should pay careful attention so that their hair does not get stuck in the inlets (the perforated openings in the front).

Small children should not be in the pool without supervision, especially not when the Jet Swim Athlete device is in operation. Always inform all the other bathers in the pool before starting the Jet Swim Athlete.

Always make sure that the power to the pump is turned off prior to any work, service or maintenance of the pump begins.

Dimensions, placement and engine room

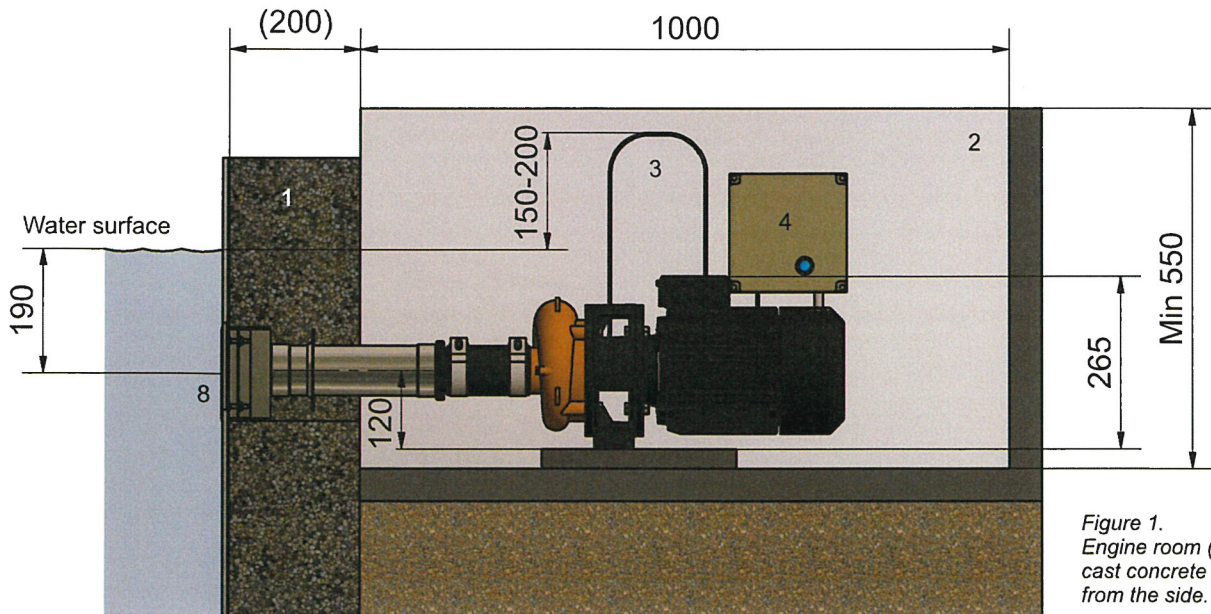
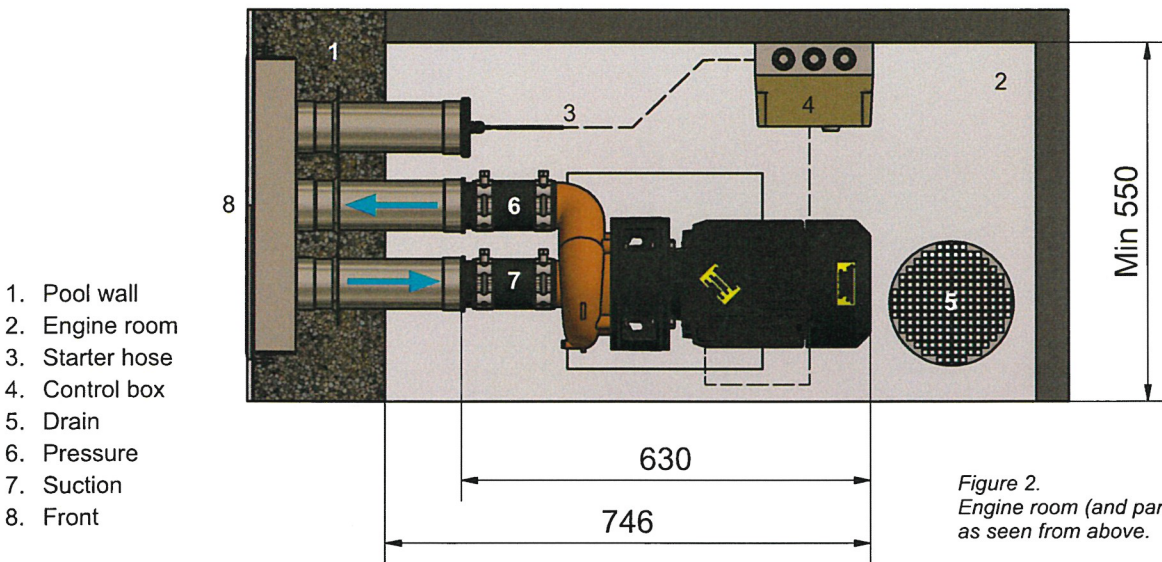
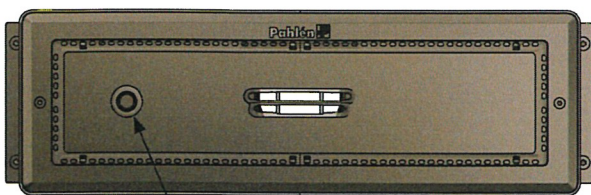


Figure 1. Engine room (and part of a cast concrete pool) as seen from the side.



- 1. Pool wall
- 2. Engine room
- 3. Starter hose
- 4. Control box
- 5. Drain
- 6. Pressure
- 7. Suction
- 8. Front

Figure 2. Engine room (and part of a cast pool wall) as seen from above.



A. Button on/off

Bild 3: Jet Swim Athlete sedd framifrån

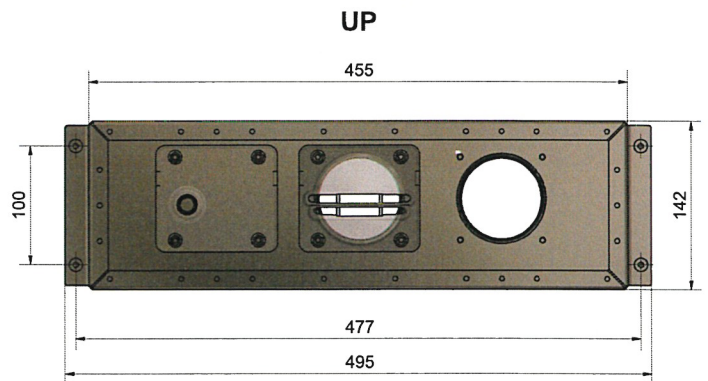


Figure 4: Enclosure's dimensions and location

Installation

Mount the pump part on a firm surface in a dry space.

Ensure that the space has good ventilation and is provided with drains to prevent flooding.

All mounting of stainless-steel parts shall be carried out with tools intended solely for the respective material to maintain corrosion resistance. All screws should be greased with Molykote® (supplied).

Note!

The starter hose must always be laid in a loop 150–200 mm above the water surface.

Never run the pump dry as this will damage the shaft seal.

Electrical installation must be carried out by a qualified electrician and fitted with a residual current device.

1. Installation for thin pool wall with liner

(wood, sheet metal, plastic, etc.)

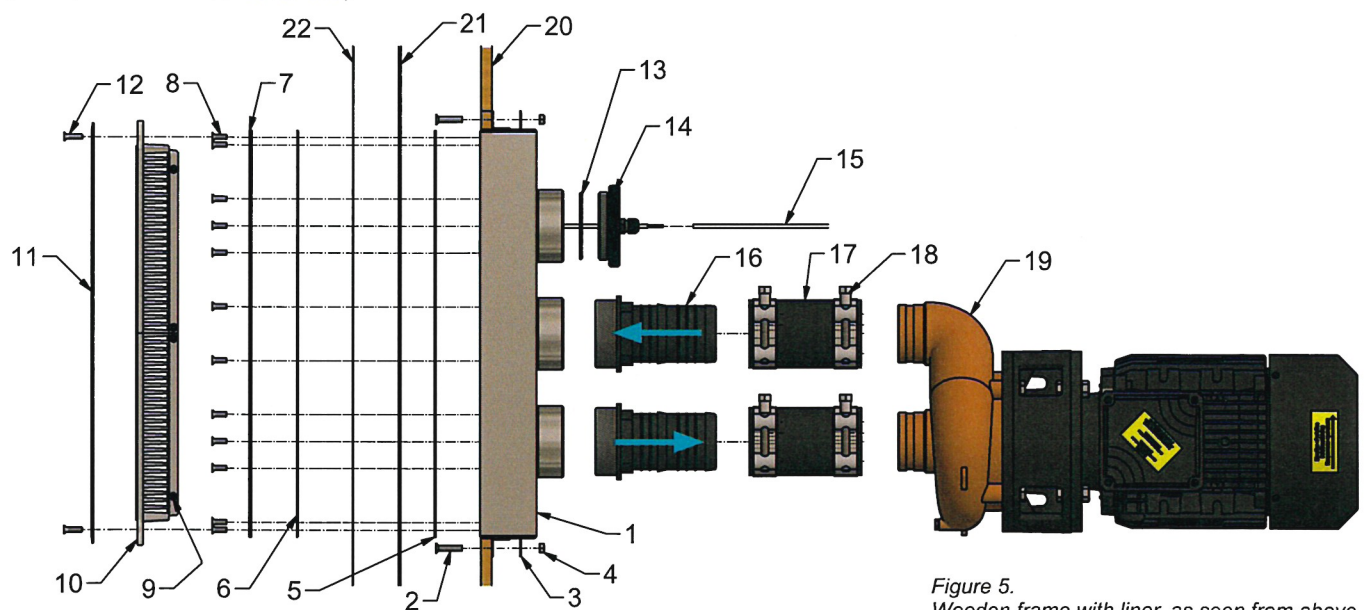


Figure 5.
Wooden frame with liner, as seen from above.

1. Make a hole (approx. 457x144 mm) in the pool wall for the enclosure (item 1). Use the enclosure as a template: mark and drill the four holes on the sides (drill Ø6).
2. Place the enclosure in the hole with the flanges facing the outside of the pool body. Install with screws (item 2), washers (item 3) and nuts (item 4).
3. Attach the self-adhesive gasket (item 5) to the enclosure.
4. Mount the wall mat and liner.
5. Fill the pool with water up to 5 cm below the enclosure.
6. Screw (item 8) the fastening frame (item 7) with the rubber gasket (item 6) underneath the enclosure with 5 Nm in tightening torque. The screws must be greased.
7. Cut off the liner against the inside of the clamping frame.
8. Fit the inlet grille (item 10) and the stainless-steel front (item 11) with the screws (item 11) to be greased.
9. Mount the starter hose, see section "Installing the starter hose" on page 13.
10. Connect the pump (item 19) with the supplied hose socket (item 16), hose (item 17) and hose clamps (item 18). The pool can then be filled with water to the desired level.
11. Electrical connection must be carried out by a qualified electrical installer, see section "Electrical installation".

NOTE! The pump must never run without water.

1. Niche
2. Countersunk screw M6x30 (4 pcs)
3. Washer (4 pcs)
4. Nut (4 pcs)
5. Self-adhesive gasket
6. Packing
7. Mounting frame
8. Countersunk screw M5x16 (24 pcs)
9. Screw M4x10 (8 pcs)
10. Inlet grille (3 parts)
11. Front
12. Countersunk screw M5x20 (2 pcs)
13. O-ring
14. Plug
15. Starter hose (two parts)
16. Hose socket (2 pcs)
17. Hose (2 pcs)
18. Hose clamp (4 pcs)
19. Pump
20. Pool body (plywood)
21. Wall mat
22. Liner

2. Installation for thick pool wall

Note!

Any reinforcement must never be closer than 50 mm to stainless steel material.
The pool wall must be pre-plastered before assembling the specific details.

2a. Thick pool wall with liner

(Bricks, thermoblock, concrete, etc.)

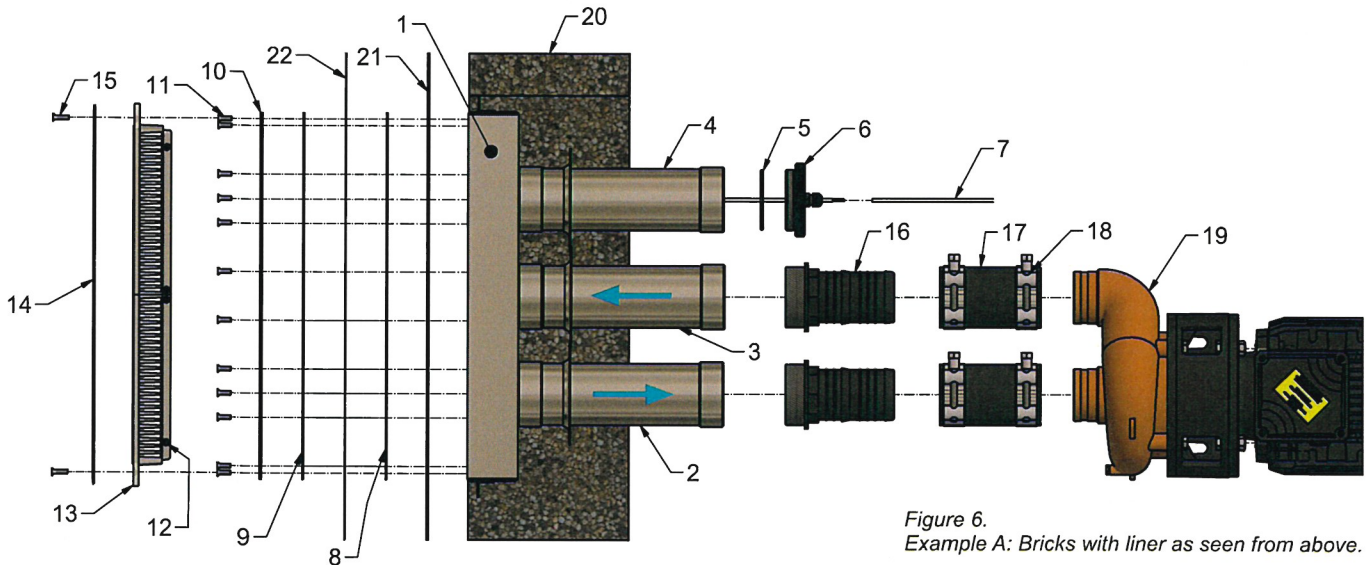


Figure 6.
Example A: Bricks with liner as seen from above.

1. Make holes in the pool wall / mold and fix the enclosure (item 1).
The flange on the enclosure must be installed with the finished pool wall.
2. Connect the starter hose (item B) to the enclosure, see Section "3 Installing the starter hose" on page 13.
3. Mount all the pipes (items 2–4) in the enclosure. All threads must be sealed with thread tape.
4. Cast (alternatively, masonry brick).
5. Attach the self-adhesive gasket (item 8) to the enclosure flange.
6. Mount the wall mat and liner.
7. Fill the pool with water up to 5 cm below the enclosure.
8. Screw (item 11) the fastening frame (item 10) with the rubber gasket (item 9) underneath the enclosure flange with 5Nm in tightening torque. The screws must be greased.
9. Cut off the liner against the inside of the mounting frame.
10. Mount the inlet grille (item 13) and the front (item 14). These screws (item 15) must also be greased.
11. Connect the pump (item 19) with the supplied hose socket (item 16), hose (item 17) and hose clamps (item 18). The pool can then be filled with water to the desired level.
12. Electrical connection must be carried out by a qualified electrical installer, see section "Electrical installation".

1. Niche
2. Casting pipes (suction)
3. Casting pipes (pressure)
4. Casting pipe start
5. O-ring
6. Plug
7. Starter hose (two parts)
8. Self-adhesive gasket
9. Packing
10. Mounting frame
11. Recessed screw M5x16 (24 pcs)
12. Screw M4x10 (8 pcs)
13. Inlet grille (3 parts)
14. Front
15. Recessed screw M5x20 (2 pcs)
16. Hose socket (2 pcs)
17. Hose (2 pcs)
18. Hose clamp (4 pcs)
19. Pump
20. Pool body (brick)
21. Wall mat
22. Liner

NOTE! The pump must never run without water.

2b. Thick pool wall without liner

(Concrete with tile / mosaic)

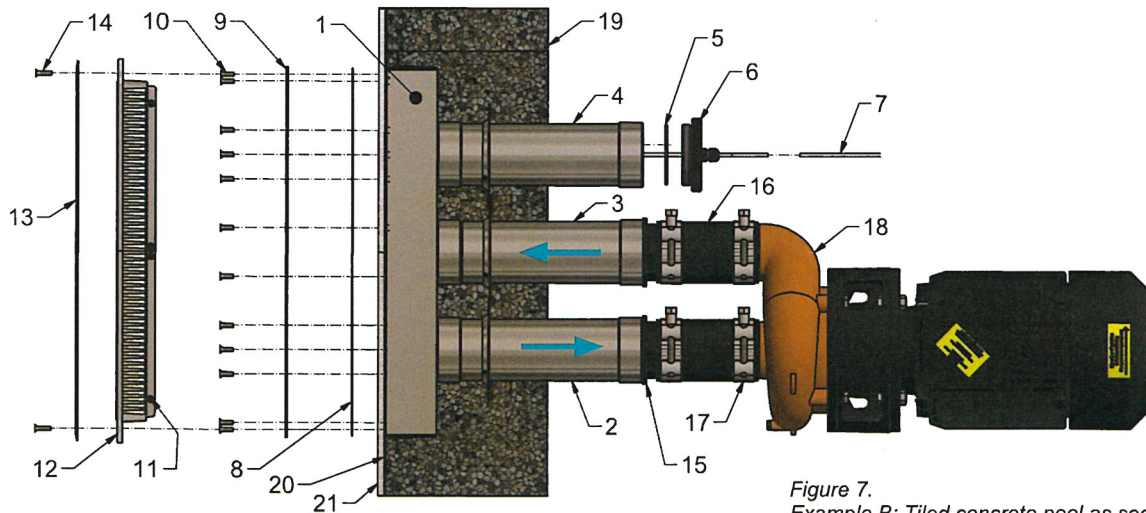


Figure 7.
Example B: Tiled concrete pool as seen from above.

1. Mount the enclosure (item 1) in the mold. The enclosure flange should be installed with a finished pool wall.
2. Connect the starter hose (item B) to the enclosure, see Section “3 Installing the starter hose” below.
3. Mount all the casting pipes (items 2-4) in the enclosure. All threads must be sealed with thread tape.
4. Pour the cast.
5. When the concrete is burnt (and the tiling or painting is done):
Mount the mounting frame (item 9) with the gasket (item 8) underneath with 5Nm in tightening torque for the screws (item 10). These screws must be greased.
6. Mount the inlet grille (item 12) and front (item 13) with screw (item 14).
Grease these screws as well.
7. Connect the pump (item 18) with the supplied hose socket (item 15), hose (item 16) and hose clamps (item 17). The pool can then be filled with water to the desired level.
8. Electrical connection must be carried out by a qualified electrical installer.

NOTE! The pump must never run without water.

1. Nische
2. Casting pipes (suction)
3. Casting pipes (pressure)
4. Casting pipe start
5. O-ring
6. Plug
7. Starter hose (two parts)
8. Packing
9. Mounting frame
10. Recessed screw M5x16 (24 pcs)
11. Screw M4x10 (8 pcs)
12. Inlet grille (3 parts)
13. Front
14. Recessed screw M5x20 (2 pcs)
15. Hose socket (2 pcs)
16. Hose (2 pcs)
17. Hose clamp (4 pcs)
18. Pump
19. Pool body (concrete)
20. Plaster
21. Surface layer (tile / mosaic)

3. Installing the starter hose

Do the following:

1. Cut a piece of the supplied hose to part 1 of the starter hose (B), not the part, see figure 8.
Keep in mind that the length of the hose must take into account any possible future service options, with or without the need to lower the pool's water level.
2. Mount the starter hose part 1 to the connection nipple (A) in the enclosure.
3. Thread the other end of the starter hose onto the metal tube (D) and allow about a third of the tube to protrude from the tube.
4. Thread the hose with the pipe through the cable gland (C) located in the plug. The pipe must be placed in the middle of the cable gland with a bit of hose B outside, see the Figure.
5. Tighten the plug on the enclosure (thin body) or on the inflow tube (thick pool frame).
6. Fix the hose end by tightening the cable screws.
7. Thread the starter hose part 2 (E) on that part of the tube which protrudes from the cable gland.
8. Connect the other end of the starter hose E to the control cable box.

NOTE!

Starter hose E (part 2) must be laid in a loop 150–200 mm above the water surface.

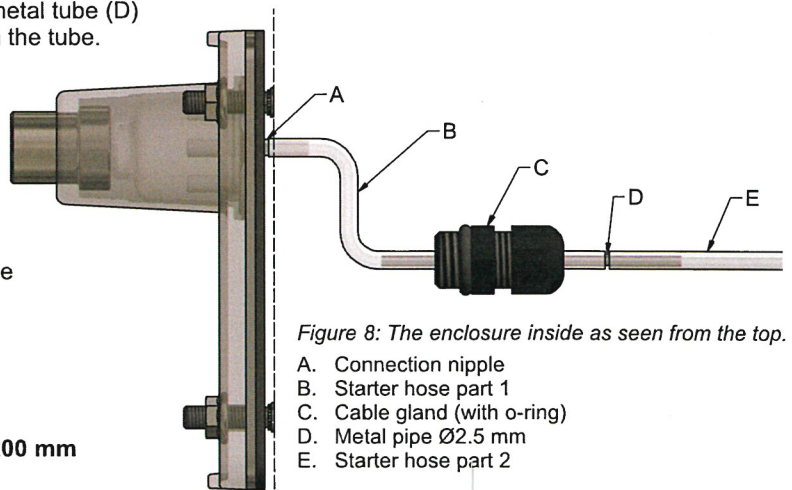


Figure 8: The enclosure inside as seen from the top.

- A. Connection nipple
- B. Starter hose part 1
- C. Cable gland (with o-ring)
- D. Metal pipe $\varnothing 2.5$ mm
- E. Starter hose part 2

Electrical installation

The pump engine must be switched on via the Jet Swim automatic cabinet, see wiring diagram below. Check the nameplate of the pump engine for proper connection on coupling plates.

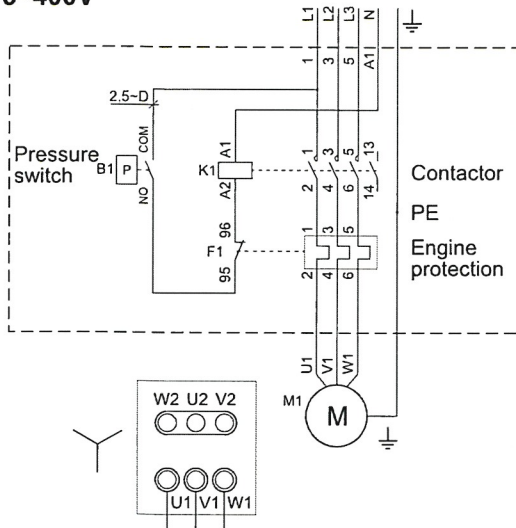
NOTE! The pump must never be started without being filled with water.

WARNING

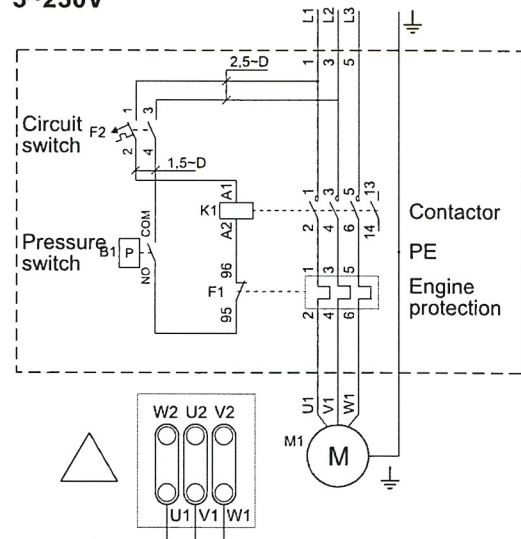
- The electrical installation may only be carried out by a qualified electrician in accordance with the instructions provided with the pump.
- As electrical installation regulations differ from country to country, contactors, cables, connection components, and enclosures must be selected based on local regulations.
- A main isolator must be installed before all live electrical connections on the pump. This must be an all-pole isolator that satisfies the requirements set out in IEC/EN 60335-1 paragraphs 7.12.2, 22.2 and 24.3.
- The pump shall be fed via a residual current device with maximum leakage current of no more than 30mA.
- The pump shall be fitted with an all-pole switch and approved automatic motor circuit breaker that should be set to match the motor's rated current, see the pump motor rating plate.
- Check that the pump's direction of rotation is the same as system flow – see the arrow on the motor housing.

Electrical wiring diagram

3~400V



3~230V



Starting

The pump housing must be water-filled before starting.

Never run the pump dry as this may damage the components.

1. Start by pressing the start button (A) in the front, see Figure 3.
2. The jet is turned off with button A.

Note

In case of freezing risk: Lower the water level to about 10 cm below the Jet Swim Athlete's enclosure to avoid freezing damage.

Release the plug on the back and drain any water. Drain the pump as well. The pump must be stored in a protected place (indoors).

On restart: first check the condition of the hoses.